

Work chairs

HEPRO



Empowerment • Safety • Quality of life

View and purchase our products at hepro.no

Adjustable comfort

Hepro work chairs are ergonomic and comfortable . They are top quality and hard wearing. The chairs are safe, have readily accessible levers and feature many adjustment options for personalised sitting comfort. This is an overview of the functions that feature in all our models.

Ergonomic back

- Good lumbar support
- Seamless height regulation
- Good cushioning
- Optimal shape
- Adjustable back tilt
- Neck support option

Flexible armrests

- Adjustable height and width
- Extendable
- Can be tilted backwards to ease access/egress for wheelchair users
- Can be tilted backwards without altering height setting

Seat quality

- Ergonomically shaped
- Good support
- Good cushioning
- Anti-slide material
- Relieving for pressure points
- Adjustable seat depth

Regulation/levers

- Readily accessible levers
- Many individual regulation options. Right or left side
- Brake can be mounted on left or right side
- Good and secure wheel brakes

Wheel base and wheels

- Robust and solid
- Good legroom
- Fold-up foot-rest
- Broad, stable wheels
- Easy-roll



Seat lift

Most of our chairs can be supplied with gas or electric lifting in accordance with user needs.

With **gas lifting**, you get 10, 15 or 20 cm seat lift. The chair can then be adjusted a further 4-12 cm manually, depending on the model.

With **electric lifting**, you get 10, 15 or 20 cm seat lift. The chair can then be adjusted a further 6-12 cm manually, depending on the model.

Hepro recommends electric lifting for weak users or users that have poor balance.

Overview of our models



G2 Standard

G2 Standard for active users. Our lowest work chair with simple, readily accessible adjustment options.

Page 4



E2 Standard

E2 Standard for active users. E2 Standard has a small back-rest with good side supports and electric lifting to help users in and out of the chair.

Page 5



G2 Aktiv

G2 Aktiv provides good relief for active users. With floating tilt. A sturdy work chair for active use at home or at work.

Page 6



E1 Kilo

Work chair with electric seat lift for users up to 230 kg Kilo is a robust chair with 10 cm electric seat-lift. E1 Kilo aims to help activate users who sit still as a result of high body-weight.

Page 7



G2 Coxit

G2 Coxit for relief of hip and leg injury. G2 Coxit features a split seat to provide stretching out options for users with hip/knee problems.

Page 8



E2 Coxit

E2 Coxit for relief of hip and leg injury. E2 Coxit features a split seat to provide stretching out options for users with hip/knee problems.

Page 9



G2 Tilto HR

Tilto with extra high back-rest for excellent support and sitting comfort. Choose Tilto for longer periods of sitting where there is a need for activity and movement.

Page 10



E2 Tilto HR

Tilto with extra high back-rest for excellent support and sitting comfort. Electric lifting to help users in and out of the chair. Choose Tilto for longer periods of sitting where there is a need for activity and movement.

Page 11



G2 Tilto EHR

Work chair with manual seat lift and tilt. This model is specially designed for users who spend a lot of time sitting in their work chair. The unique feature of our Tilto models is the tilt function which contributes to variation and movement.

Page 12



E2 Tilto EHR

Work chair with electric seat lift and tilt. This model is specially designed for users who spend a lot of time sitting in their work chair. The unique feature of our Tilto models is the tilt function which contributes to variation and movement.

Page 13



Tilto G2 24/7

Tilto G2 24/7 for extended periods in sitting position. The 24/7 model is supplied with extra cushioning and breathable fabric options so that you can sit in comfort for long periods. The tilt function provides movement options.

Page 14



Tilto E2 24/7

Tilto E2 24/7 for extended periods in sitting position. The 24/7 model is supplied with extra cushioning and breathable fabric options so that you can sit in comfort for long periods. The tilt function provides movement options.

Page 15



S1 Stand support

Standing support chairs with manual regulation for standing work. The chairs provide good support with manual adjustment options for seat height, seat tilt and back-rest angle.

Page 16

Hepro G2 Standard

Our lowest work chair with gas lift

Hepro G2 Standard is an easy-to-manage work chair that is ergonomically shaped to the body and features Hepro's proprietary wheel base which provides increased mobility. G2 Standard is the chair for you if you need relief and support in an active working day. The chair's rotation, combined with a small back-rest, provides excellent reach and is therefore particularly suitable in an active work situation.

G2 Standard is our lowest work chair and particularly suitable for shorter users or users who need to get in and out of wheelchairs. Curved back-rest provides good side support. The chair is supplied with broad, easy-roll wheels.



Fabric: Comfort 0049

Standard 10 cm gas lift

| | |
|--|------------------|
| G2 Standard Locks at 90 ° | Art. no 30300 |
| Description | Measurements |
| Seat cushion width x depth | 46 x 42 cm |
| Back-rest width x height | 40 x 36 cm |
| Measurements for gas lift (with manual lift in lowest position) | |
| Min – max seat height | 37 – 47 cm |
| + additional manual lift | 7 cm |

Standard 15 cm gas lift

| | |
|--|------------------|
| G2 Standard Locks at 90 ° | Art. no 30302 |
| Description | Measurements |
| Seat cushion width x depth | 46 x 42 cm |
| Back-rest width x height | 40 x 36 cm |
| Measurements for gas lift (with manual lift in lowest position) | |
| Min – max seat height | 41-57 cm |
| + additional manual lift | 10 cm |

Standard 20 cm gas lift

| | |
|--|------------------|
| G2 Standard Locks at 90 ° | Art. no 30304 |
| Description | Measurements |
| Seat cushion width x depth | 46 x 42 cm |
| Back-rest width x height | 40 x 36 cm |
| Measurements for gas lift (with manual lift in lowest position) | |
| Min – max seat height | 46 – 66 cm |
| + additional manual lift | 10 cm |

Hepro E2 Standard

Work chair with electric seat lift

Hepro E2 Standard is an easy-to-manage work chair that is ergonomically shaped to the body and features Hepro's proprietary wheel base which provides increased mobility. The model features electric seat-raising and lowering and is especially suitable for users with poor balance or impaired strength in legs or hands that prevents them from getting in/out of the work chair without assistance.

E2 Standard is the chair for you if you need relief and support and require assistance in/out of your work chair. The chair's rotation, combined with a small back-rest, provides excellent freedom of movement. Curved back-rest provides good side support.



Fabric: Comfort 0049

Standard 15 cm electric seat lift

| | |
|---|------------------|
| E2 Standard Locks at 90° | Art. no 30350 |
| Description | Measurements |
| Seat cushion width x depth | 46 x 42 cm |
| Back-rest width x height | 40 x 36 cm |
| Measurements for electric lift (with manual lift in lowest position) | |
| Min – max seat height | 47 – 63 cm |
| + additional manual lift | 10 cm |

Standard 20 cm electric seat lift

| | |
|---|------------------|
| E2 Standard Locks at 90° | Art. no 30352 |
| Description | Measurements |
| Seat cushion width x depth | 46 x 42 cm |
| Back-rest width x height | 40 x 36 cm |
| Measurements for electric lift (with manual lift in lowest position) | |
| Min – max seat height | 55 – 75 cm |
| + additional manual lift | 10 cm |

Hepro G2 Aktiv

Work chairs with gas lift and floating tilt

Hepro G2 Aktiv has been developed for optimal flexibility and mobility. The chair features many individual adjustment options and functions for different needs. With the floating tilt function in the open position, the chair follows your movements to provide support, relief and variation of sitting position. Both seat and back-rest are ergonomically shaped for good sitting comfort.

G2 Aktiv is particularly suitable for support and relief when undertaking work tasks at home or in the office.



Fabric: Comfort 0049

Aktiv 10 cm gas lift

| | |
|--|------------------|
| G2 Aktiv Locks at 90 ° | Art. no 30311 |
| Description | Measurements |
| Seat cushion width x depth | 46 x 46 cm |
| Back-rest width x height | 37 x 43 cm |
| Measurements for gas lift (with manual lift in lowest position) | |
| Min – max seat height | 43,5 – 53,5 cm |
| + additional manual lift | 4 cm |

Aktiv 15 cm gas lift

| | |
|--|------------------|
| G2 Aktiv Locks at 90 ° | Art. no 30313 |
| Description | Measurements |
| Seat cushion width x depth | 46 x 46 cm |
| Back-rest width x height | 37 x 43 cm |
| Measurements for gas lift (with manual lift in lowest position) | |
| Min – max seat height | 43,5 – 59,5 cm |
| + additional manual lift | 9 cm |

Aktiv 20 cm gas lift

| | |
|--|------------------|
| G2 Aktiv Locks at 90 ° | Art. no 30315 |
| Description | Measurements |
| Seat cushion width x depth | 46 x 46 cm |
| Back-rest width x height | 37 x 43 cm |
| Measurements for gas lift (with manual lift in lowest position) | |
| Min – max seat height | 48 – 67,5 cm |
| + additional manual lift | 10 cm |

Hepro E1 Kilo

Work chair with electric seat lift for users up to 230 kg

E1 Kilo is an alternative for you if you need a work chair designed for high user-weight and to contribute to increased mobility. Kilo is a robust chair with 10 cm electric seat-lift. Armrests can be folded back to ease moving into/out of other chairs/wheelchairs.

E1 Kilo aims to help activate users who sit still as a result of high body-weight. The chair rolls easily on broad wheels while the solid wheelbase makes the chair stable and safe. The back-rest angle can be adjusted according to need and the electric seat-lift helps the user in/out of the chair.

Seat rotation is not a feature of the E1 Kilo.



Fabric: Comfort 0049

E1 Kilo 10 cm electric seat lift

| E1 Kilo | Art. no 30380 |
|-----------------------------------|------------------|
| Description | Measurements |
| Total breadth (incl. brake lever) | 73 cm |
| Seat size (B&D) | 55 x 50 cm |
| Seat depth | 46-60 cm |
| Seat height | 51-61 cm |
| Back-rest (HxB) | 40 x 36 cm |
| Back-rest (height regulation) | + 8 cm |
| Back-rest (angle regulation) | +5° - - 48° |
| Armrest (inner width regulation) | 46-63 cm |
| Armrest (height regulation) | 17-27 cm |
| Max user weight | 230 kg |
| Weight (std. chair complete) | 39 kg |

Hepro G2 Coxit

Work chair with split seat and gas lift

Specially developed for users with hip or knee problems. Coxit has a larger seat which is split at the front. This makes it possible to sit with one leg lower than the other. The chair comes with gas seat-lift to help users with impaired functioning to attain a standing position. Fold-back armrests make it easier to move to another chair or wheelchair.

Otherwise the chair shares the same features as the user-friendly E2 Standard, which is ergonomically shaped and comes with Hepro's proprietary wheelbase to aid increased mobility. Chair rotation provides good freedom of movement. The chair is delivered with seat height adjustment options of 15 or 20 cm. Additional manual seat height adjustment up to a further 12 cm is an option on both models. Curved back-rest provides extra good side support.



Fabric: Comfort 0049

Coxit 10 cm gas lift

| | |
|--|------------------|
| G2 Coxit Locks at 90 ° | Art. no 30331 |
| Description | Measurements |
| Seat cushion width x depth | 48 x 46 cm |
| Back-rest width x height | 40 x 44 cm |
| Measurements for gas lift (with manual lift in lowest position) | |
| Min – max seat height | 39 – 49 cm |
| + additional manual lift | 4 cm |

Coxit 15 cm gas lift

| | |
|--|------------------|
| G2 Coxit Locks at 90 ° | Art. no 30330 |
| Description | Measurements |
| Seat cushion width x depth | 48 x 46 cm |
| Back-rest width x height | 40 x 44 cm |
| Measurements for gas lift (with manual lift in lowest position) | |
| Min – max seat height | 43 – 58 cm |
| + additional manual lift | 10 cm |

Coxit 20 cm gas lift

| | |
|--|------------------|
| G2 Coxit Locks at 90 ° | Art. no 30332 |
| Description | Measurements |
| Seat cushion width x depth | 48 x 46 cm |
| Back-rest width x height | 40 x 44 cm |
| Measurements for gas lift (with manual lift in lowest position) | |
| Min – max seat height | 48 – 67 cm |
| + additional manual lift | 10 cm |

Hepro E2 Coxit

Work chair with split seat and electric lift

Specially developed for users with hip or knee problems. Coxit has a larger seat which is split at the front. This makes it possible to sit with one leg lower than the other. The chair comes with electric seat-lift to help users with impaired functioning to attain a standing position. Fold-back armrests make it easier to move to another chair or wheelchair.

Otherwise the chair shares the same features as the user-friendly E2 Standard, which is ergonomically shaped and comes with Hepro's proprietary wheelbase to aid increased mobility. Chair rotation provides good freedom of movement. The chair is delivered with seat height adjustment options of 15 or 20 cm. Additional manual seat height adjustment up to a further 12 cm is an option on both models. Curved back-rest provides extra good side support.



Fabric: Comfort 0049

Coxit 15 cm electric seat lift

| | |
|--|------------------|
| E2 Coxit Locks at 90 ° | Art. no 30335 |
| Description | Measurements |
| Seat cushion width x depth | 48 x 46 cm |
| Back-rest width x height | 40 x 44 cm |
| Measurements for gas lift (with manual lift in lowest position) | |
| Min – max seat height | 47 – 63 cm |
| + additional manual lift | 10 cm |

Coxit 20 cm electric seat lift

| | |
|--|------------------|
| E2 Coxit Locks at 90 ° | Art. no 30336 |
| Description | Measurements |
| Seat cushion width x depth | 48 x 46 cm |
| Back-rest width x height | 40 x 44 cm |
| Measurements for gas lift (with manual lift in lowest position) | |
| Min – max seat height | 55 – 75 cm |
| + additional manual lift | 10 cm |

Hepro G2 Tilto HR

Work chair with manual seat lift and tilt

Tilto is well-known for its ergonomically shaped seat and back-rest. The chair features many individual adjustment options to provide movement and variation. Tilto comes with Hepro's proprietary wheelbase, which provides good legroom and mobility options. Tilto has an extra high back and neck support for support and relief. This model is specially designed for users who spend a lot of time sitting in their work chair. G2 Tilto can be tilted backwards to alter pressure points and open the airways. This model has inflatable lumbar support.

Tilt function

The unique feature of our Tilto models is the tilt function which contributes to variation and movement. When working, it is easy to end up in a forward-leaning, static sitting position that results in impaired circulation. With the tilt function in open position, the chair follows the body's movements all the way back to a relaxed sitting position which opens the airways, stretches the upper body and provides good circulation. Movement adds to variation, relieving pressure on vulnerable pressure points and aiding good blood circulation to the pelvis, hips and thighs.



Fabric: Comfort 0049

Tilto 10 cm gas lift

| | |
|--|------------------|
| G2 Tilto Locks at 90 ° | Art. no 30321 |
| Description | Measurements |
| Seat cushion width x depth | 47 x 48 cm |
| Back-rest width x height | 44 x 51 cm |
| Measurements for gas lift (with manual lift in lowest position) | |
| Min – max seat height | 44– 55 cm |
| + additional manual lift | 4 cm |

Tilto 15 cm gas lift

| | |
|--|------------------|
| G2 Tilto Locks at 90 ° | Art. no 30323 |
| Description | Measurements |
| Seat cushion width x depth | 47 x 48 cm |
| Back-rest width x height | 44 x 51 cm |
| Measurements for gas lift (with manual lift in lowest position) | |
| Min – max seat height | 49 – 63 cm |
| + additional manual lift | 10 cm |

Tilto 20 cm gas lift

| | |
|--|------------------|
| G2 Tilto Locks at 90 ° | Art. no 30325 |
| Description | Measurements |
| Seat cushion width x depth | 47 x 48 cm |
| Back-rest width x height | 44 x 51 cm |
| Measurements for gas lift (with manual lift in lowest position) | |
| Min – max seat height | 53– 74 cm |
| + additional manual lift | 10 cm |

Hepro E2 Tilto HR

Work chair with electric seat lift and tilt

Tilto is well-known for its ergonomically shaped seat and back-rest. The chair features many individual adjustment options to provide movement and variation. Tilto comes with Hepro's proprietary wheelbase, which provides good legroom and mobility options. Tilto has an extra high back and neck support for support and relief. This model is specially designed for users who spend a lot of time sitting in their work chair. E2 Tilto can be tilted backwards to alter pressure points and open the airways. This model has inflatable lumbar support.

Tilt function

The unique feature of our Tilto models is the tilt function which contributes to variation and movement. When working, it is easy to end up in a forward-leaning, static sitting position that results in impaired circulation. With the tilt function in open position, the chair follows the body's movements all the way back to a relaxed sitting position which opens the airways, stretches the upper body and provides good circulation. Movement adds to variation, relieving pressure on vulnerable pressure points and aiding good blood circulation to the pelvis, hips and thighs.



Tilto 10 cm electric seat lift

| | |
|--|------------------|
| E2 Tilto Locks at 90 ° | Art. no 30072 |
| Description | Measurements |
| Seat cushion width x depth | 47 x 48 cm |
| Back-rest width x height | 44 x 62 cm |
| Measurements for gas lift (with manual lift in lowest position) | |
| Min – max seat height | 47 – 57 cm |
| + additional manual lift | 4 cm |

Tilto 15 cm electric seat lift

| | |
|--|------------------|
| E2 Tilto Locks at 90 ° | Art. no 30356 |
| Description | Measurements |
| Seat cushion width x depth | 47 x 48 cm |
| Back-rest width x height | 44 x 51 cm |
| Measurements for gas lift (with manual lift in lowest position) | |
| Min – max seat height | 54 – 70 cm |
| + additional manual lift | 10 cm |

Tilto 20 cm electric seat lift

| | |
|--|------------------|
| E2 Tilto Locks at 90 ° | Art. no 30357 |
| Description | Measurements |
| Seat cushion width x depth | 47 x 48 cm |
| Back-rest width x height | 44 x 51 cm |
| Measurements for gas lift (with manual lift in lowest position) | |
| Min – max seat height | 59 – 79 cm |
| + additional manual lift | 10 cm |

Hepro G2 Tilto EHR

Work chair with manual seat lift and tilt

Tilto is well-known for its ergonomically shaped seat and back-rest. The chair features many individual adjustment options to provide movement and variation. Tilto comes with Hepro's proprietary wheelbase, which provides good legroom and mobility options. Tilto has an extra high back and neck support for support and relief. This model is specially designed for users who spend a lot of time sitting in their work chair. G2 Tilto can be tilted backwards to alter pressure points and open the airways. This model has inflatable lumbar support.

Tilt function

The unique feature of our Tilto models is the tilt function which contributes to variation and movement. When working, it is easy to end up in a forward-leaning, static sitting position that results in impaired circulation. With the tilt function in open position, the chair follows the body's movements all the way back to a relaxed sitting position which opens the airways, stretches the upper body and provides good circulation. Movement adds to variation, relieving pressure on vulnerable pressure points and aiding good blood circulation to the pelvis, hips and thighs.



Fabric: Comfort 0049

Tilto 10 cm gas lift

| | |
|--|------------------|
| G2 Tilto Locks at 90 ° | Art. no 30320 |
| Description | Measurements |
| Seat cushion width x depth | 47 x 48 cm |
| Back-rest width x height | 44 x 62 cm |
| Measurements for gas lift (with manual lift in lowest position) | |
| Min – max seat height | 44 – 55 cm |
| + additional manual lift | 4 cm |

Tilto 15 cm gas lift

| | |
|--|------------------|
| G2 Tilto Locks at 90 ° | Art. no 30322 |
| Description | Measurements |
| Seat cushion width x depth | 47 x 48 cm |
| Back-rest width x height | 44 x 62 cm |
| Measurements for gas lift (with manual lift in lowest position) | |
| Min – max seat height | 49 – 63 cm |
| + additional manual lift | 10 cm |

Tilto 20 cm gas lift

| | |
|--|------------------|
| G2 Tilto Locks at 90 ° | Art. no 30324 |
| Description | Measurements |
| Seat cushion width x depth | 47 x 48 cm |
| Back-rest width x height | 44 x 62 cm |
| Measurements for gas lift (with manual lift in lowest position) | |
| Min – max seat height | 53 – 74 cm |
| + additional manual lift | 10 cm |

Hepro E2 Tilto EHR

Work chair with electric seat lift and tilt

Tilto is well-known for its ergonomically shaped seat and back-rest. The chair features many individual adjustment options to provide movement and variation. Tilto comes with Hepro's proprietary wheelbase, which provides good legroom and mobility options. Tilto has an extra high back and neck support for support and relief. This model is specially designed for users who spend a lot of time sitting in their work chair. E2 Tilto can be tilted backwards to alter pressure points and open the airways. This model has inflatable lumbar support.

Tilt function

The unique feature of our Tilto models is the tilt function which contributes to variation and movement. When working, it is easy to end up in a forward-leaning, static sitting position that results in impaired circulation. With the tilt function in open position, the chair follows the body's movements all the way back to a relaxed sitting position which opens the airways, stretches the upper body and provides good circulation. Movement adds to variation, relieving pressure on vulnerable pressure points and aiding good blood circulation to the pelvis, hips and thighs.



Fabric: Comfort 0049

Tilto 10 cm electric seat lift

| | |
|--|------------------|
| E2 Tilto Locks at 90 ° | Art. no 30366 |
| Description | Measurements |
| Seat cushion width x depth | 47 x 48 cm |
| Back-rest width x height | 44 x 62 cm |
| Measurements for gas lift (with manual lift in lowest position) | |
| Min – max seat height | 47 – 57 cm |
| + additional manual lift | 4 cm |

Tilto 15 cm electric seat lift

| | |
|--|------------------|
| E2 Tilto Locks at 90 ° | Art. no 30358 |
| Description | Measurements |
| Seat cushion width x depth | 47 x 48 cm |
| Back-rest width x height | 44 x 62 cm |
| Measurements for gas lift (with manual lift in lowest position) | |
| Min – max seat height | 54 – 70 cm |
| + additional manual lift | 10 cm |

Tilto 20 cm electric seat lift

| | |
|--|------------------|
| E2 Tilto Locks at 90 ° | Art. no 30359 |
| Description | Measurements |
| Seat cushion width x depth | 47 x 48 cm |
| Back-rest width x height | 44 x 62 cm |
| Measurements for gas lift (with manual lift in lowest position) | |
| Min – max seat height | 59 – 79 cm |
| + additional manual lift | 10 cm |

Hepro G2 Tilto 24/7

Work chair with manual seat lift and tilt

G2 Tilto 24/7 is the chair for you if you sit in your chair for many hours a day over a longer period and have a greater need for relief and comfort. Extra consideration has therefore been given to ergonomics and sitting comfort. The chair has extra cushioning in the seat and back-rest and can be upholstered in special 24/7 breathable material so that you can sit comfortably for longer periods. The model has many individual adjustment options to suit your needs. Like the other Tilto models, the chair is designed to activate inactive users by means of the tilt function. This model has inflatable lumbar support. Standard fabrics: WK012

Tilt function

The unique feature of our Tilto models is the tilt function which contributes to variation and movement. When working, it is easy to end up in a forward-leaning, static sitting position that results in impaired circulation. With the tilt function in open position, the chair follows the body's movements all the way back to a relaxed sitting position which opens the airways, stretches the upper body and provides good circulation. Movement adds to variation, relieving pressure on vulnerable pressure points and aiding good blood circulation to the pelvis, hips and thighs.



Fabric: WK12

Tilto 24/7 10 cm gas lift

| | |
|--|------------------|
| G2 Tilto 24/7 Locks at 90 ° | Art. no 30363 |
| Description | Measurements |
| Seat cushion width x depth | 49 x 52 cm |
| Back-rest width x height | 44 x 62 cm |
| Measurements for gas lift (with manual lift in lowest position) | |
| Min – max seat height | 46 – 57 cm |
| + additional manual lift | 4 cm |

Tilto 24/7 15 cm gas lift

| | |
|--|------------------|
| G2 Tilto 24/7 Locks at 90 ° | Art. no 30364 |
| Description | Measurements |
| Seat cushion width x depth | 49 x 52 cm |
| Back-rest width x height | 44 x 62 cm |
| Measurements for gas lift (with manual lift in lowest position) | |
| Min – max seat height | 51 – 72 cm |
| + additional manual lift | 10 cm |

Tilto 24/7 20 cm gas lift

| | |
|--|------------------|
| G2 Tilto 24/7 Locks at 90 ° | Art. no 30365 |
| Description | Measurements |
| Seat cushion width x depth | 49 x 52 cm |
| Back-rest width x height | 44 x 62 cm |
| Measurements for gas lift (with manual lift in lowest position) | |
| Min – max seat height | 56 – 76 cm |
| + additional manual lift | 10 cm |

Hepro E2 Tilto 24/7

Work chair with electric seat lift and manual tilt

E2 Tilto 24/7 is the chair for you if you sit in your chair for many hours a day over a longer period and have a greater need for relief and comfort. Extra consideration has therefore been given to ergonomics and sitting comfort. The chair has extra cushioning in the seat and back-rest and can be upholstered in special 24/7 breathable material so that you can sit comfortably for longer periods. The model has many individual adjustment options to suit your needs. Like the other Tilto models, the chair is designed to activate inactive users by means of the tilt function. This model has inflatable lumbar support. Standard fabrics: WK012

Tilt function

The unique feature of our Tilto models is the tilt function which contributes to variation and movement. When working, it is easy to end up in a forward-leaning, static sitting position that results in impaired circulation. With the tilt function in open position, the chair follows the body's movements all the way back to a relaxed sitting position which opens the airways, stretches the upper body and provides good circulation. Movement adds to variation, relieving pressure on vulnerable pressure points and aiding good blood circulation to the pelvis, hips and thighs.



Fabric: WK12

Tilto 24/7 15 cm electric seat lift

| | |
|--|------------------|
| E2 Tilto 24/7 Locks at 90 ° | Art. no 30360 |
| Description | Measurements |
| Seat cushion width x depth | 49 x 52 cm |
| Back-rest width x height | 44 x 62 cm |
| Measurements for gas lift (with manual lift in lowest position) | |
| Min – max seat height | 57 – 72 cm |
| + additional manual lift | 10 cm |

Tilto 24/7 20 cm electric seat lift

| | |
|--|------------------|
| E2 Tilto 24/7 Locks at 90 ° | Art. no 30361 |
| Description | Measurements |
| Seat cushion width x depth | 49 x 52 cm |
| Back-rest width x height | 44 x 62 cm |
| Measurements for gas lift (with manual lift in lowest position) | |
| Min – max seat height | 61,– 82 cm |
| + additional manual lift | 10 cm |

Hepro S1, S2, S6, S9 og S10

Standing support chairs with manual regulation for standing work

Standing support models are designed for physically higher work and for those requiring relief in standing work. The chairs provide good support with manual adjustment options for seat height, seat tilt and back-rest angle.

Choose from models with stable sliders or models with wheels, with or without load operated brakes, which permit mobility for work involving a lot of movement. Hepro also offers standing support chair accessories for special requirements.



S1 Standing support chair
18 cm gas lift



S9 Standing support chair
18 cm gas lift



S10 Standing support chair
18 cm gas lift

| Measurements and dimensions | S1 | S2 | S6 | S9 | S10 | Specifications | S1 | S2 | S6 | S9 | S10 |
|---------------------------------|-------------|-------------|-------------|------------|-------------|----------------------------------|-------|-------|-------|-------|-------|
| General construction | | | | | | Art. no | 30111 | 30112 | 30119 | 30120 | 30120 |
| Seat size | 41x38 cm | 41x38 cm | 41x38 cm | 35x32 cm | 41x38 cm | Saddle seat | x | x | x | | x |
| Seat height | 51-69 cm | 54-72 cm | 54-72 cm | 54-72 cm | 54-72 cm | Flat sitting cushion | | | | x | |
| Seat angle regulation | -14° - +18° | -14° - +18° | -14° - +18° | -8° - +16° | -14° - +18° | Back support | x | x | x | | x |
| Back-rest | 38 x 23 cm | 38x23 cm | 38x23 cm | 22x26 cm | 38x 3 cm | Chest support | | | | x | |
| Back-rest (height regulation) | +10 cm | +10 cm | +10 cm | +10 cm | +10 cm | Free rotation | x | x | | x | x |
| Back-rest (angle regulation) | +7° - -59° | +7° - -59° | +7° - -59° | +7° - -59° | +7° - -59° | Wheels without brakes | | | | x | |
| User weight (max.) | 120 kg | 120 kg | 120 kg | 120 kg | 120 kg | Wheels with load op. brakes | | | x | | x |
| Weight (std. chair complete) | 11 kg | | 11 kg | 11 kg | 11 kg | Hepro wheelbase with wheel brake | | x | | | |
| Gas lift 24 cm for seat height | 57-81 cm | | 60-84 cm | 60-84 cm | 60-84 cm | Sliders | x | | | | |
| Gas lift 18 cm for seat height* | 51-69 cm* | | 54-72 cm* | 54-72 cm* | 54-72 cm* | | | | | | |
| Gas lift 13 cm for seat height | 40-53 cm | | 43-56 cm | 43-56 cm | 43-56 cm | | | | | | |
| Gas lift 9 cm for seat height | 34-43 cm | | 37-46 cm | 37-46 cm | 37-46 cm | | | | | | |

* Gas springs delivered as standard.

Applicable conditions

Applicable conditions for Hepro work chairs

Hepro AS is committed to functional design and quality. The company holds many certificates, including ISO 9001 (quality) from Teknologisk institutt, Norsk akkreditering, El retur and Grønt punkt. All our products are additionally certified in accordance with the prevailing standards within our industry.

Delivery terms

Hepro AS strives to effect prompt delivery to our agents. We thus offer a rapid delivery service for our standard models. Our standard range is normally ready for consignment from our factory within 10 days. Work chairs tailored to customer specifications are usually consigned from the factory within four weeks.

Transport damage

If damage to goods may be deemed to have occurred during transport, the recipient/purchaser must report the damage to the transporter within 7 days of the goods being received.

Product guarantee

Different product guarantees cover the various main products. All items share the following guarantees: The 5 year warranty is valid from the month of delivery and covers fabrication faults, materials and construction on condition that the product is used in the normal way. The guarantee applies to consignment of parts to agents. Work and other costs incurred in connection with, for example, delivery to end user or repair, are to be covered by the agent.

Tests

Product group 2: Work chair

- EN 1021 – 1
- EN 1021 – 2
- EN 1335-1, 2, 3
- NEK EN 60601-1
- NEK IEC 60601-1-2

Change to orders

Hepro AS accepts changes to orders on complete work chairs until construction has started. This incurs a fee of NOK 350,-. Changes to rapid delivery items (see 'Delivery terms', above) are not accepted.

Environmental responsibility

A focus on environmental and climate issues is maintained in all our operations. All our products are produced from recyclable materials.

Our load on the external environment is reduced by means of continuous, systematic environmental work. Hepro AS is approved as a 'green point'. Environmental accounting for each product is available on request.

Fire safety classification

Fire safety of cushioning material and fabric is tested and approved in accordance with:

- EN 1021-1
- EN 1021-2

Hepro AS offers a number of different fabrics through Hepro's fabric programme. All our fabrics/leathers are guaranteed for 5 years with normal use (8 hours/day). The guarantee is conditional upon normal cleansing of the chair and fabric/leather. Normal fabric wear is exempt and not covered by the guarantee.

For further information, please contact us or visit our website at Hepro.no. We reserve the right to undertake changes to products and prices. We also disclaim liability for any printing errors.



| Element | G2 Standard | E2 Standard | G2 Activ | G2 Coxit | E2 Coxit | G2 Tilto HR | E2 Tilto HR | G2 Tilto EHR | E2 Tilto EHR | G2 Tilto 24/7 | E2 Tilto 24/7 |
|--|--------------|--------------|--------------|--------------|--------------|--------------|--------------|--------------|--------------|---------------|---------------|
| Seat lift (man/el) | man. | el. | man. | man. | el. | man. | el. | man. | el. | man. | el. |
| Gas spring designed for user-weight(min-max kg) | 25-150 | - | 25-150 | - | - | 25-150 | - | 10-150 | - | 25-150 | - |
| Angle regulation seat, forwards (degrees) | 25 | 25 | 9 | 25 | 25 | 25 | 25 | 10 | 10 | 10 | 10 |
| Angle regulation seat, backwards (degrees) | 7 | 7 | 6 | 7 | 7 | 6 | 6 | 6 | 6 | 6 | 6 |
| Seat rotation (yes/no) | yes | yes | yes | yes | yes | yes | yes | yes | yes | yes | yes |
| Seat rotation lock (yes/no) | yes | yes | yes | yes | yes | yes | yes | yes | yes | yes | yes |
| Angle regulation back-rest (yes/no) | yes | yes | yes | yes | yes | yes | yes | yes | yes | yes | yes |
| Height regulation back-rest (yes/no) | yes | yes | yes | yes | yes | yes | yes | yes | yes | yes | yes |
| Armrests, width (cm) | 8 | 8 | 8 | 8 | 8 | 8 | 8 | 8 | 8 | 8 | 8 |
| Armrests, length (cm) | 35 | 35 | 35 | 35 | 35 | 35 | 35 | 35 | 35 | 35 | 35 |
| Armrest height from seat min. (cm) | 20 | 20 | 20 | 20 | 20 | 20 | 20 | 20 | 20 | 20 | 20 |
| Armrest height from seat max. (cm) | 27 | 27 | 27 | 27 | 27 | 27 | 27 | 27 | 27 | 27 | 27 |
| Breadth between armrests min. (cm) | 38 | 38 | 43 | 38 | 38 | 43 | 43 | 43 | 43 | 36 | 36 |
| Breadth between armrests max. (cm) | 52 | 52 | 52 | 52 | 52 | 52 | 52 | 52 | 52 | 52 | 52 |
| Fold-back foot-ring (yes/no) | yes | yes | yes | yes | yes | yes | yes | yes | yes | yes | yes |
| Wheel brake (yes/no) | yes | yes | yes | yes | yes | yes | yes | yes | yes | yes | yes |
| Moveable brake lever, right and left side (yes/no) | yes | yes | yes | yes | yes | yes | yes | yes | yes | yes | yes |
| Chair-breadth at widest point (cm) | 68 | 68 | 68 | 68 | 68 | 68 | 68 | 68 | 68 | 68 | 68 |
| User weight - max kg | 150 | 150 | 150 | 150 | 150 | 150 | 150 | 150 | 150 | 150 | 150 |
| Total weight (kg) | 26 | 29 | 26 | 27 | 30 | 35 | 40 | 35 | 35 | 36 | 41 |
| Standard fabric | Comfort 0049 | Comfort 0049 | Comfort 0049 | Comfort 0049 | Comfort 0049 | Comfort 0049 | Comfort 0049 | Comfort 0049 | Comfort 0049 | WK012 | WK012 |

Fabrics

Standard all chairs

Comfort 0049

Grey



Options

Comfort 0040

Blue



Comfort 1414

Red



Comfort 0050

Black



Option

Tilto 24/7 chair

WK012



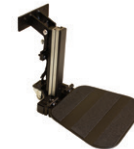
Accessories

Options for personalised sitting comfort

| Art. No. | Accessories | Regarding models |
|----------|--|---------------------------------------|
| 30798 | Amputation foot lean Right | Standard/Tilto/Tilto 24/7 |
| 30802 | Amputation foot lean Left | Standard/Tilto/Tilto 24/7 |
| 30882 | Footplate to 1/4 foot-ring 2004 | Standard/Tilto/Tilto 24/7 |
| 31258 | Telescopic foot support, divided footplate | Standard |
| 31265 | Telescopic foot support, whole footplate | Standard |
| 31585 | Telescopic foot supp., div. footplate, inc. adapter | Tilto/Tilto 24/7 |
| 31586 | Telescopic foot supp., whole footplate, inc. adapter | Tilto/Tilto 24/7 |
| 31275 | Leg support to telescopic foot supp. L + R | Standard/Tilto/Tilto 24/7 |
| 31261 | Foot supp. length compensation. Right | Standard/Tilto/Tilto 24/7 |
| 31260 | Foot supp. length compensation. Left | Standard/Tilto/Tilto 24/7 |
| 31136 | Armrest Moveon, Right, firm | G1/G2/E1/E2 |
| 31139 | Armrest Moveon, Left, firm | G1/G2/E1/E2 |
| 31593 | Armrest Comfort 2004 Right | Standard/Tilto/Tilto 24/7 |
| 31594 | Armrest Comfort 2004 Left | Standard/Tilto/Tilto 24/7 |
| 30806 | Armrest adapter 2004, lowers armrest 6.5 cm | Standard/Tilto/Tilto 24/7 |
| 31288 | Escort handle | Standard/Tilto/Tilto 24/7 |
| 32178 | Back-rest cushion EHR 400 with trunk support | G2 Tilto EHR/E2 Tilto EHR |
| 31595 | Trunk support integrated in back-rest | Standard/Tilto/Tilto 24/7 |
| 31911 | Back-rest exterior Tilto HR 300 | G2 Tilto |
| 31227 | Lumbar support 20X40 | G1/G2/E1/E2 |
| 31228 | Lumbar support 16x30 | G1/G2/E1/E2 |
| 31808 | Thigh side support. Right | Standard/Tilto/Tilto 24/7 |
| 31809 | Thigh side support. Left | Standard/Tilto/Tilto 24/7 |
| 31936 | Castor, double with wheels Ø75 without brake | Standard/Tilto |
| 31937 | Castor, double with wheels Ø75 with brake | Standard/Tilto |
| 31674 | Electric brake | E2 Basic/ E2 Tilto 24/7 |
| 31681 | Table | All workchairs |
| 31801 | Abduction block | G2 Basic/E2 Basic |
| 32176 | Flat seat, fit to suit | - |
| 32144 | Incontinence seat cover. Basic. Medium | G2 Standard Medium/E2 Standard Medium |
| 32145 | Incontinence seat cover. Basic. Large | G2 Standard Large/E2 Standard Medium |
| 31489 | Foot-ring for standing support chairs | Standing support chairs |



Telescopic foot support, divided footplate



Telescopic foot support, whole footplate



Armrest Comfort for workchair and coxit chair



Leg support for workchair



Trunk support integrated in back-rest



Lumbar support for workchair and coxit chair



Thigh side support for workchair and coxit chair



Abduction block for workchair



Foot-ring for standing support chairs

Empowerment • Safety

• Quality of life

See our full range of products at hepro.no

HEPRO AS is a modern, forward-thinking specialist company which develops, manufactures and sells high-quality aids and welfare technology, all of which is thoughtfully designed. Our head office is in Rognan, at the innermost part of the Saltenfjord, surrounded by mountains and dramatic natural scenery.

The company was established in 1987 and has many years of experience in developing products and solutions designed to make life easier for our customers. Our vision is to give our customers the opportunity to be independent, active participants in their own lives, and to live at home for longer. Because of our high quality, fast response times and short lines of communication, Hepro is the obvious first choice for our customers.

We work closely with ergotherapists to develop products and solutions tailored to our customers' needs to help them with mobility, balance, comfort and hygiene. Our aim is to provide safety, independence and an increased level of activity through functional products designed around the needs of our customers. We get to know our users and make the effort to deliver products that suit the needs of the individual.